

AS LA SD

DIGITAL NEWSLETTER

FALL 2024



HONOR AWARD: SAN DIEGO YOUTH TRANSITION CAMPUS
SCHMIDT DESIGN GROUP



asla-sandiego.org

VISION

A world where the built and natural environments coexist in harmony and sustainable balance, where all peoples can express their diverse heritage and their individual desires to grow and thrive; and where we, as a profession, can substantially contribute to the process of achieving these ends.

MISSION

To lead, to educate and to participate in the careful stewardship, wise planning and artful design of our cultural and natural environments.

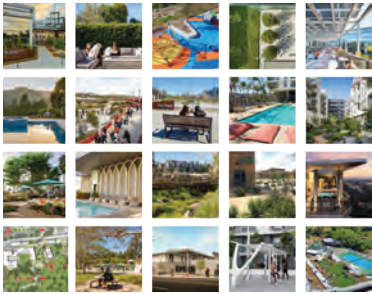
Left Image:
**MERIT AWARD: WILSON MIDDLE &
CENTRAL ELEMENTARY SCHOOLS**
SPURLOCK LANDSCAPE ARCHITECTS



4
**President's
Message**
JACKIE HIGGINS, ASLA



6
**President-Elect
Message**
KATHRYN KANAAN, ASLA



9
**Community
Grant Deadline
Extended**
DIFAN CHEN, ASLA



14
**Park(ing) Day 2024:
A Creative
Reimagining
of Urban Spaces**
WEI WANG, ASLA

2024 EVENT PHOTOS [18](#)
EMERGING PROFESSIONALS UPDATE [21](#)
CLIMATE ACTION COMMITTEE UPDATE [24](#)
TRUSTEE UPDATE [27](#)

ASLASD UPCOMING EVENTS [28](#)
ASLA EXECUTIVE COMMITTEE [29](#)
SPONSORS [30](#)

PRESIDENT'S MESSAGE

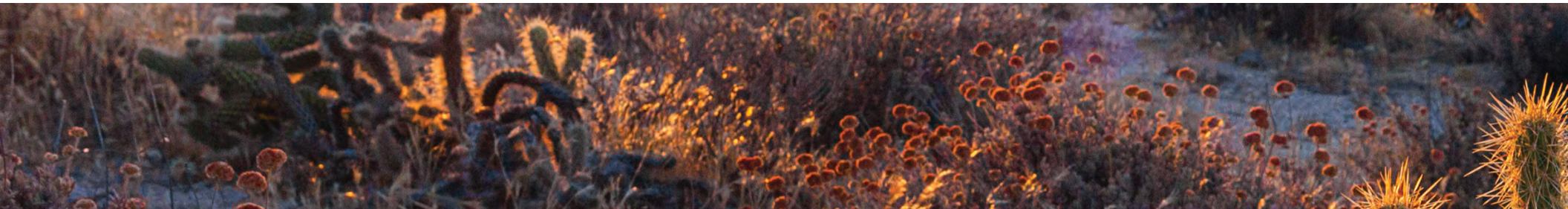


ABOUT THE AUTHOR
JACKIE HIGGINS, ASLA
CHAPTER PRESIDENT

As I sit to write this quarterly article today, I would typically look outward and nationally to inform our San Diego Chapter membership of all the wonderful national happenings and resources that we have as ASLA members. However, this quarter we must reflect internally within our own chapter. We have had a tremendous loss locally. Tracy Morgan Hollingworth passed away on August 5th of this year. Tracy joined ASLA SD as the consulting Executive Director over twenty years ago and quickly became a driving force behind numerous initiatives that have shaped our chapter's path forward. Under Tracy's leadership, we saw unprecedented growth and development and her commitment to excellence and unwavering dedication to our mission inspired us all to strive for greater heights. Tracy worked to advance equity in publications and news coverage for our profession and within our community, leaving an indelible mark on the local land planning community. She was a passionate advocate for acknowledging women's contributions to the landscape architecture and planning community.

To those who had the privilege of working closely with Tracy she was more than an executive director; she was a mentor and a friend. Tracy's ability to connect with people on a personal level, offering guidance and support, has left a lasting impact on me and many people that I've spoken with in the past weeks. She believed in the potential of every individual and encouraged us to pursue ideas with passion and determination.

As we mourn the loss of Tracy, we also celebrate her life and the incredible legacy she leaves behind. Tracy's energy is like ripples in a pond, her passionate vitality will continue to reverberate for years to come in all that we are and all that we do especially within San Diego. We are honoring her memory by renaming our annual community grant to the Tracy Morgan-Hollingworth Community grant. We believe this will continue to honor her legacy of advocacy for community focused land planning and continue to improve the lives of San Diegans.



THE PAST IS GONE, THE FUTURE IS NOT PROMISED, NOW IS THE ONLY TIME WE HAVE.

In the past seven weeks, ASLA San Diego Board members and past board members have come together to secure the future of our chapter. I'd like to wholeheartedly thank all of you who have stepped forward and reached out and given of your time and talents. Our local organization is in a strong position because of you, and with a full slate of new board members stepping up in the next couple months we will continue to move forward to build a better, more informed, and more conscious community for San Diego.

I will leave you with a thought that resonates loudly with me at this time, paraphrased from Buddha. The past is gone, the future is not promised, now is the only time we have. Now is the time to get involved with ASLA SD and help champion a better community, better society, and a better world.



PRESIDENT-ELECT MESSAGE



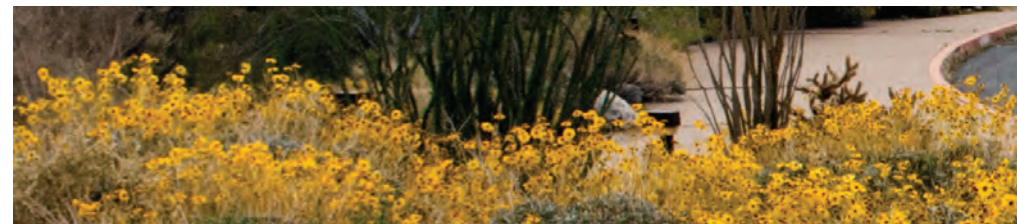
ABOUT THE AUTHOR
KATHRYN KANAAN, ASLA
PRESIDENT-ELECT

Well it feels kind of strange to be writing my first article on the last newsletter of the year. You may think that as President-Elect I have been quiet this year, but the role of PE is anything but quiet. My first role was to call upon our local and regional vendors to request them to partner with our chapter through sponsorship and help us to promote and protect our profession and their products and services. Asking for money is not my favorite thing to do, but it provided me the opportunity to meet and speak with past and present sponsors and was such a blessing.

Thank you to all of our 2024 sponsors, you have made this year fun starting with our kickoff at RCP Block and Brick that highlighted products from Agri Service, Grant + Associates, Soil Retention Systems and Stepstone Inc., Toro/Irritrol, Tournesol and Unique Lighting, to plant talks and tours at Everde and Native West Nurseries, to the tour of Hunter Industries, Practicing our golf swings with Old Castle/Belgard at swing social, and most recent, a workout with Kompan at the new park within Waterfront Park on Harbor Blvd. We all look forward to future events from our sponsors for there is still time this year to hold an event! Members, **take a look at our sponsor page** and be sure to thank everyone and promote their products whenever you can. <https://www.asla-sandiego.org/sponsors/>

This was the year for the design awards and because I will be chairing it in 2026, I offered to lend a hand and learn from the master, Kenya Huezo. She did a fantastic job from beginning to end and what an experience to get a sneak peak of the entries as they came in, and listen and transcribe while the jury discussed the projects and decided on the awards.

The passing of Tracy is and was such a tragedy. Our hearts go out to her husband Andy (whom helped her with many of our events), sisters Kathleen (who as well helped with many events) and Mary Ellen and life-long friend Debbie, who with Andy, has been instrumental in our being able to gather all of our digital files, access banking information, combining storage lockers and telling us great stories of the Tracy we did not know. Andy, you have been amazing to us as you navigate your own grief and life change. As I write this, I am looking at a blue stained-glass dragonfly that came from Tracy's office and now resides in mine. It has already provided peace, comfort and a sounding board for when Jackie and I cannot find something.



HAD FORGOTTEN HOW MUCH FUN THE EVENTS ARE.

Thank you to everyone who has stepped in to help us with this transition. Andrew Hatch we are drawing you back in 😊. Gregg Roesink, you have gone above and beyond with your generosity. Debbie you gave Jackie and I laughs and friendship as we sifted through the office files and computers. As excitable as I can get like a bull in a china shop, Jackie is the opposite and maneuvers through with peace and grace. We could not have a better President to handle this and I am grateful to be working side by side with her for us all.

If the above was not enough excitement for the year, **we have our golf tournament coming up on October 28th!** Maderas here we come. Yet again there was the duty of asking for sponsorships and wow, a great group has accepted the call to be onsite to display their products, sponsor a game or two, provide us with lunch or dinner. <https://www.eventbrite.com/e/2024-asla-golf-tournament-tickets-854869436497?aff=oddtcreator>

Finally, I would like to say it has been a pleasure to come back onto the board after a long stint away. Had forgotten how much fun the events are, how nice it is to collaborate with our peers for the betterment of the profession, and to meet new friends from around the United States. You should really contemplate volunteering for an ASLA committee, City or County Committee, or future Board Position, you never know what could happen. You could meet your future husband/wife, start a new firm with a friend, decide a career in politics is your next step, or validate that you are where you need to be.

I look forward to seeing you all at the Golf Tournament and Holiday Gala.



BRINGING YOUR DESIGN INTENT TO REALITY SINCE 1905.



Old Town San Diego State Historic Park (San Diego, CA) (Lithomosaics), Directors Place – Interior (San Diego, CA) (Lithocrete Sedimentary Walls & Epoxy Cement System), Directors Place – Exterior (San Diego, CA) (Lithocrete Sedimentary Walls & Lithocrete), The Boardwalk at Science Center (San Diego, CA) (Quarried Stone Finish), San Diego Symphony - The Rady Shell at Jacobs Park (San Diego, CA) (Quarried Stone & Honed Concrete), Sunnyvale Sedimentary Wall (Sunnyvale, CA) (Lithocrete Sedimentary Walls)

For more than a century T.B. Penick & Sons, Inc. has been providing owners, architects, contractors, and specifiers like you, with the most advanced technologies in concrete materials and finishes. We enthusiastically support your vision, bringing quality, craft, and long-term value to those projects you wish to create. We look forward to working with you, ensuring that your design intent is accurately realized each and every step of the way.



858-558-1800 | www.TBPenickICS.com
LITHOCRETE® TERRAZZO SITE CONCRETE

**T.B. PENICK
& SONS, INC.**

CHAPTER **COMMUNITY GRANT** APPLICATION AVAILABLE

SUBMISSION DEADLINE EXTENDED TO OCTOBER 31ST



ABOUT THE AUTHOR

DIFAN CHEN, ASLA

VP COMMUNITY OUTREACH

The San Diego Chapter of the American Society of Landscape Architects (SDASLA) invites local non-profits to apply for 2025 Community Grant of up to \$5,000 to design or construct landscape architectural improvements in San Diego County.

This grant program was established in 1997 as a commitment to the local community with the intention of providing a benefit to the community or environment as well as educating and enhancing community awareness of the profession of landscape architecture. Over 20 past grants have funded a variety of projects including community improvement workshops, project design and construction, purchase of landscape amenities, and re-design and improvement of older community.

Any non-profit community group recognized by the IRS and the Secretary of State, located in San Diego County, and has been in continuous existence as a non-profit group for a minimum of three years is eligible to receive the grant. Projects

must prove that they have the support and involvement of their community and/or environmental interests within San Diego County, and applications must show a clear benefit to the wider community.

For more details and application materials, please go to SDASLA's website www.asla-sandiego.org/events or by emailing VP Community Outreach [Difan Chen](mailto:Difan.Chen@asla-sandiego.org) for more information. The application deadline has extended to October 31, 2024.

2024 Community Grant Receipt – Julian Community Heritage Foundation Updates

Last year we awarded Julian Community Heritage Foundation with the project Julian Town Square which sits at the main intersection in the heart of downtown Julian, CA. The site was a brown field after decades of remediation following benzene contamination from a gas station that had been located at this location.

For decades it was filled with weeds and only had a dilapidated fence keeping people out. The development of the Julian Town Square will provide a safe outdoor gathering space, which will be a natural multi-use recreational park for thousands of people including both local and visiting tourists.

The development of the Town Square will be done in three phases, and the grant will be used as part of Phase 1 development. Phase 1 development consists of rough grading & trenching, electrical and irrigation systems, decomposed granite walking surfaces, stone veneer raised planters, landscape plant materials, storage shed,

benches & picnic tables, trash receptacles, and a donor recognition wall. The grant will pay for a significant portion of labor and materials for the raised planters of this phase.

Now that Julian Community Heritage Foundation have secured their building permits and with the funding they have raised, they will be moving forward with Phase 1 of development - grading, trenching and installing electricity and irrigation and pouring the slab for the storage building. They also have added beautiful cedar benches to the project, handmade by a local artist (see photos).





SAN DIEGO'S HIGHEST-QUALITY OUTDOOR RECREATION PRODUCTS

LET US HELP YOU DISCOVER THE FUN

Coast Recreation represents the finest manufacturers in the outdoor recreation industry. Whether you are looking for outdoor shade systems, site furniture, playground equipment or surfacing, we are here to help.

We also offer tailored Lunch and Learn or CEU sessions to expand your team's knowledge and development. Contact us to arrange these sessions and benefit from valuable insights and education.



Mike Eisert & Tim Warfield



Phone : 714-619-0100

Mail : info@coastrecreation.com

Website : www.coastrecreation.com



EVERDE GROWERS NURSERY TOUR AND NEW PLANTS PRESENTATION



Everde Growers held a special nursery tour and new plants presentation for ASLA members on Friday, September 6.

The tour was led by Suzie Wiest, New Products & Marketing Representative and included an introduction to the newest cutting-edge plants as well as a plant raffle.

Personal favorites that were introduced include Eternal Blaze Grevillea (Grevillea hybrid 'Eternal Blaze'), a mounding groundcover with red blooms, Eternal Sunshine Grevillea (Grevillea 'GRE 109'), an upright mid-size shrub with nearly constant blooms, and Kings Fire Grevillea (Grevillea 'Kings Fire'), an excellent pollinator plant with red toothbrush-like blooms. Arctic Frost Lomandra (Lomandra longifolia 'Arctic Frost') features luminescent variegation for contrasting color and texture and has year-round availability, and Skyscraper Senecio (Senecio ficoides 'Mount Everest') is a fast-growing accent plant with a strong, upright growth habit.

Everde also announced the upcoming **10th annual Horticultural Encounter, which will be held November 6 - 7, 2024**. The event will feature an exciting keynote speaker, Noel Kingsbury, author, garden designer, and horticultural lecturer, speaking on his book "Wild: The Naturalistic Garden".

For more information about Everde's current plant inventory, please contact Suzie Wiest, (858) 699-0442 or swiest@everde.com.

Growing Plants for Life
10th Annual Horticultural Encounter®
Presented by Everde Growers®

Join Everde Growers® for the 10th annual Horticultural Encounter! The free, virtual event will feature exciting guest speakers, panel discussions on marketing and plant trends, new plants, raffle prizes and more!

November 6
10 AM PST **Welcome to the Horticultural Encounter®** with David Kirby, Executive Vice President, Everde Growers®
10:15 AM PST **Foodscaping with Fruiting Trees and Shrubs** with Eric Arthur, renowned horticulturist, author, and speaker
11:20 AM PST **Panel Discussion: Leveraging National Brands and Buying Groups for Local Growth** with Crystal Cady, CEO/Design/Build, Northwest Nursery Buyers Association; Corinna Murray, Director of Marketing, Plant Development Services; and Phil Fulkner, Vice President of Sales, Master Nursery Garden Centers
12:10 PM PST **Foundations of Horticultural Therapy** with Nicholas Staddon, Company Spokesman, Everde Growers
12:20 PM PST **New Products for 2025 and beyond** with Tom Foley, Director of Product Development, Everde Growers
1 PM PST **Q&A LIVE** with Suzie Wiest, Nicholas Staddon, Grace McDonald, and Tom Foley

November 7
10 AM PST **Welcome to the Horticultural Encounter®** with David Kirby, Executive Vice President, Everde Growers®
10:15 AM PST **Wild: The Naturalistic Garden** with Noel Kingsbury, an internationally known garden writer and researcher
11:20 AM PST **State of the Industry** with Danny Summers, Managing Director, The Garden Center Group
12:20 PM PST **Horticultural Encounter® Display Tour** with Suzie Wiest and Nicholas Staddon
12:50 PM PST **Q&A LIVE** with Suzie Wiest, Nicholas Staddon, Grace McDonald, and Tom Foley

Learn more and register for the two-day event at everde.com/horticulturalencounter

**DETAILS +
REGISTRATION**

PARK(ING) DAY 2024

A CREATIVE REIMAGINING OF URBAN SPACES



ABOUT THE AUTHOR

WEI WANG, ASLA

CUPPS ADVOCACY CHAIR

On September 20th, 2024, San Diego's Fifth Avenue was transformed into a living showcase of how urban spaces can be reimagined. As part of the annual Park(ing) Day event in San Diego, McCullough Landscape Architecture, in partnership with RDC Architects, ULI San Diego-Tijuana, and the ASLA San Diego Chapter, led an inspiring initiative to reclaim parking spaces and explore their potential as human-centered environments.





Turning Parking Spaces into Creative Micro-Units

This year, McCullough developed the theme of Park(ing) Day - "Transforming Parking Spaces into Creative Micro-Units." The event challenged participants to rethink how small urban spaces—usually reserved for vehicles—could serve as vibrant, functional environments for people. With affordable housing and urban density at the forefront of the discussion, the installations prompted an exploration of how parking lots could be repurposed into high-utility, human-centered spaces.

Two parking spaces in front of McCullough Landscape Architecture's office on Fifth Avenue were transformed into a "living room" and a "bedroom," sparking conversations about urban design and the value of affordable housing.

The "living room" created a warm, welcoming space where passersby were invited to sit, relax, and engage with one another. Designed to feel like a communal gathering spot, it illustrated how even small areas can foster community and interaction. Right next to it, the "bedroom" installation offered a quieter, more private retreat, highlighting the potential for parking spaces to be converted into personal, livable areas.

These creative micro-units were designed not only to be visually striking but also to provoke thought about how cities can adapt to meet the growing need for affordable, people-centric spaces. Through design, they showcased the possibility of transforming ordinary parking spots into functional, beautiful environments that prioritize the needs of people over cars.

Raising Awareness about Affordable Housing

While the installations were temporary, the messages they conveyed were lasting. One of the core objectives of Park(ing) Day 2024 was to raise awareness about the challenges of affordable housing in urban areas. By transforming parking spaces into livable units, the event encouraged participants and onlookers to rethink how cities allocate space and how urban areas can evolve to better meet the needs of their residents.

These micro-unit installations served as a metaphor for the creative solutions that can address housing shortages and inspire conversations about how we design cities for the future. They provided a tangible way to showcase the importance of integrating human-centered design into urban planning, pushing boundaries and challenging conventional thinking about space use.

Community Engagement and Reflection

Park(ing) Day 2024 drew a diverse group of participants, including architects, urban planners, landscape architects, and community members, all eager to engage with the redesign. The event highlighted how design can bring people together and foster meaningful dialogue about the future of cities.

Visitors to the installations were encouraged to sit in the “living room,” relax, and discuss their own ideas for better use of public spaces. Many reflected on how such small interventions could lead to larger conversations about the role of public spaces in promoting community well-being.



THE “BEDROOM”, WHILE SMALL IN SCALE, SERVED AS A QUIET REMINDER OF THE HOUSING CHALLENGES THAT MANY PEOPLE FACE.

The “bedroom” installation, while small in scale, served as a quiet reminder of the housing challenges that many people face. It prompted reflection on how even the smallest spaces can be thoughtfully designed to improve quality of life and address broader societal issues.

Looking Ahead

Park(ing) Day 2024 was more than just an event—it was a call to action. It highlighted the need for creativity and innovation in addressing the pressing issues of urban living, particularly affordable housing. The success of this year’s event demonstrates the power of design to inspire change and create more equitable, people-focused cities.

As we look ahead, the hope is that the conversations sparked by Park(ing) Day will continue, influencing how we design and shape our urban environments. This year’s installations were just a glimpse of what’s possible when we challenge traditional thinking and reimagine how urban spaces can serve the community.

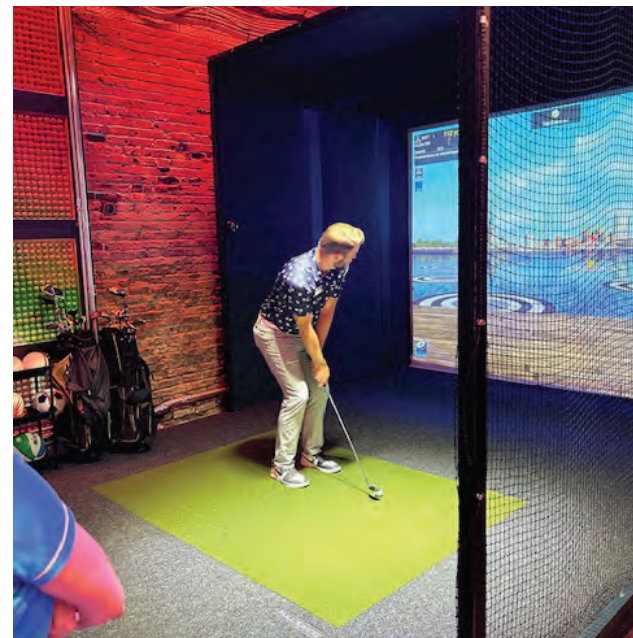
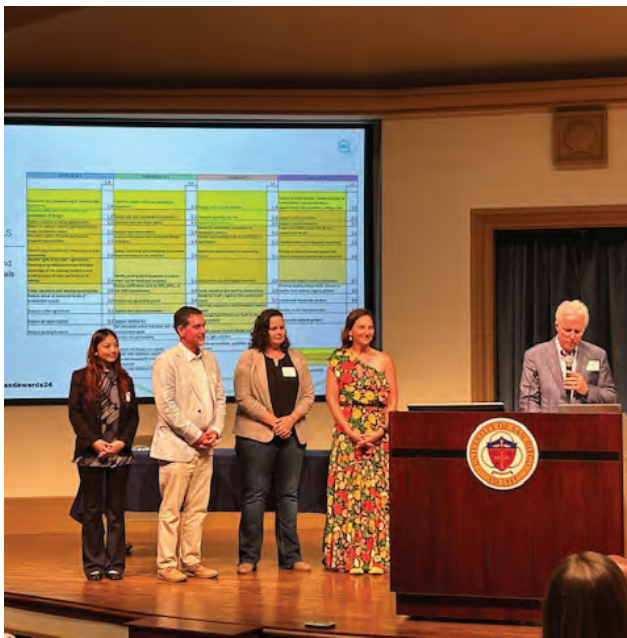
Thank You to Our Partners

A special thank you to McCullough Landscape Architecture, RDC Architects, ULI San Diego-Tijuana, and the ASLA San Diego Chapter for their collaboration and creativity in making Park(ing) Day 2024 a success. Your vision and commitment to sustainable, human-centered design made this event truly impactful.

Stay tuned for more initiatives and opportunities to engage with our ongoing efforts to transform urban spaces and create cities that work for everyone.

2024 EVENT PHOTOS







COMMUNITY + CONNECTION + ADVENTURE

everything we do is to form
 stronger communities

connections through creating
 spaces of growth

create safe spaces where
 adventure, creativity and
 imagination is discovered, risk
 pushes boundaries to growth.



dave bang
 associates inc.
 park + playground outitters

Designing FOR IMPACT

Our mission at Dave Bang Associates is to be on the cutting edge of new and innovative products in the Park + Playground space.

- 40+ Years of Service
- 40+ Brands in our catalog
- Dedicated teams to serve you

GET TO KNOW **ANTHONY**
 OUR ARCHITECT
 RESOURCE
 MANAGER

800 669-2585 | davebang.com | Anthony@davebang.com



THE 40TH ANNUAL ASLA-SD GOLF TOURNAMENT

MONDAY, OCTOBER 28, 2024
 MADERAS GOLF CLUB

COURSE CHECK-IN: 9:00AM
 SHOT GUN START: 10:30AM

HAT SPONSORS



Proceeds benefit the
 ASLA-SD
 Community
 Grant
 Program

Player registration & sponsorship
 opportunities now available at
<https://bit.ly/aslasd2024golf>



ABOUT THE AUTHOR
Gwen Stark, ASLA
EMERGING PROFESSIONALS
CO- CHAIR



ABOUT THE AUTHOR
Fernanda Suarez, ASLA
EMERGING PROFESSIONALS
CO- CHAIR

HELLO EMERGING PROFESSIONALS!

Last month was an exciting one for the San Diego Emerging Professionals. We hosted a site visit to Sweetwater Park, a large new park along the bayfront in Chula Vista, that is currently under construction. This was a great opportunity for Emerging Professionals to see a project site under construction and learn about the processes that went into designing the park site over the last few years. The KTUA design team as well as the contractor walked the tour group through the site (carefully avoiding the unstabilized DG) and described some of the main design elements in the park and how they developed from initial design to construction in the field. The tour was followed by a happy hour/ networking event at the adjacent Sun Outdoors RV event where attendees also got to tour the resort facilities.



As the summer comes to an end, we are restarting our LARE study groups for all exam sections. These study groups are a great way to connect with a network of peers also working on their licensure. The exams can feel very intimidating to get started on but having a community to share useful study resources and methods makes it feel a bit easier! In the last few weeks, we have had a lot of members who have been participating in the study groups pass their exams and begin studying for the next sections! Our meetings occur twice a week on Wednesday or Thursday evenings virtually and Sunday mornings in person.

Later this year, we are planning a social event for our members to get to know more of the Emerging Professionals in the San Diego Community. More details to come! We are excited to meet everyone in person again and we hope many of you can join.

If you are interested in participating in the study groups (for any section) or have any questions regarding EPC, please contact Gwen Stark (gwen@ktua.com) or Fernanda Suarez (fsuarez@migcom.com).



CONTACT GWEN

CONTACT FERNANDA

reproHAUS

COMPUTER ELECTRONIC INNOVATION

MODERN TECH DEVELOPMENT

GRAND FORMAT **SIGNAGE** **3D PRINTING** **TECH SERVICES**

BANNERS WINDOW GRAPHICS WAYFINDING CONSTRUCTION PROTOTYPING MODELING

BUILDING WRAPS WALL MURALS RETAIL 3D SIGNAGE CMYK FULL COLOR HIGH DEFINITION

FLOOR GRAPHICS TRADE SHOW ADVERTISING DECOR ENHANCED ACCURACY PHOTO REALISTIC

BILLBOARDS VEHICLE WRAPS COMMERCIAL REAL ESTATE ECO-FRIENDLY FAST TURNAROUND

ORDER ONLINE: WWW.REPROHAUS.NET

MANAGED PRINT FACILITIES MANAGEMENT DOCUMENT MANAGEMENT IT SERVICES

FACEBOOK TWITTER



THE SAN DIEGO
CHAPTER OF ASLA
INVITES YOU TO
JOIN US FOR OUR

**HOLIDAY
GALA**

2024 ANNUAL MEETING &
VOLUNTEER APPRECIATION EVENT

WEDNESDAY, NOVEMBER 20
6:30P RECEPTION | 7:15P DINNER | 8P PROGRAM

MISSION BAY YACHT CLUB
1215 EL CARMEL PLACE | SAN DIEGO, 92109

EVENT SPONSOR: **SiteOne**
Green Tech

RECEPTION SPONSOR: **Coast to Coast Landscape**
Architecture, Design and Planning

More details coming soon!

CLIMATE ACTION COMMITTEE UPDATE



ABOUT THE AUTHOR

Stephanie Green, ASLA

CLIMATE ACTION COMMITTEE CHAIR

Exploring Lakeside's River Park Conservancy

In July, San Diego ASLA members and friends participated in a highly educational walk with Lakeside's River Park Conservancy. This site holds a rich history, beginning as part of the San Diego River's original floodplain. In the early 1900s, this land was heavily mined for sand and gravel to support local construction, which led to significant environmental degradation. Since its founding in 2001, the Conservancy has worked tirelessly to restore the river's ecological health, focusing on habitat restoration, public access, and sustainable land management. Their efforts have transformed the area into a vibrant, biodiverse landscape, benefiting both wildlife and the surrounding community.

During our walk, many community members were enjoying the trails built by the Conservancy, taking advantage of the shaded pathways beneath a growing canopy of trees on a warm day. We learned about their ongoing restoration projects, field stations that host researchers, and future classroom buildings that will provide educational opportunities for school groups.

The Conservancy's unique approach to marrying ecological restoration with public access serves as an inspiring model. I encourage SD ASLA members to visit, book a tour, or volunteer. A special thanks to Julie Turko, the Conservancy's Executive Director, and board members Christina Burnett and Kevin Hale for guiding us and sharing their invaluable insights.





Upcoming Climate Action Events

As we step into fall, I'm excited to share several important climate action events and initiatives happening locally, nationally, and virtually. Whether you're looking to engage in urban ecology, explore biodiversity metrics, or support native plant conservation, there are numerous opportunities to get involved in climate-focused activities this season. Here's what's coming up:

November 13: Biodiversity Metrics Webinar

As the final installment of the ASLA Biodiversity & Climate Action 101 series, this webinar will highlight practical tools for measuring and enhancing biodiversity in landscape design. Once again, the session is free for all ASLA members.

[Register here: ASLA Webinar Series](#)

On-Going Events & Opportunities

Tree San Diego's "Tree Treks"

Held every second Saturday, these arborist-guided tree walks provide a unique opportunity to learn more about San Diego's urban forest. Walks take place in public parks around the county.

[Schedule and registration: Tree Treks](#)

NOAA Nature-Based Solutions Webinar Series

This monthly webinar series runs from September 2024 through January 2025 and highlights how nature-based solutions can address climate resilience and sustainability challenges.

[Register here: NOAA Webinar Series](#)

Stay Engaged & Make a Difference

I encourage you to take advantage of these events to expand your knowledge and contribute to our collective efforts toward climate resilience. The work we do as landscape architects is crucial to shaping environments that support biodiversity, mitigate climate impacts, and foster sustainable communities. If you have any questions or ideas, feel free to reach out. Let's continue leading the way in creating a sustainable future!



TRUSTEE UPDATE



ABOUT THE AUTHOR
Patricia Trauth, ASLA
CHAPTER TRUSTEE

It is with bittersweet feelings that I write this update, since I will be stepping down as your Trustee in the fall. I've held the position for the last 6 years (two terms) and it has been an honor to represent the San Diego Chapter! There were a lot of changes that we experienced during my tenure as Trustee: our former CEO, Nancy Somerville's departure, the COVID pandemic, Torey Conneen-Carter taking over the leadership of ASLA National, town hall (brain-storming) meetings, a new Strategic Plan with focus groups representing a cross section of practitioners, STEM designation for the profession of landscape architecture, and the list goes on.

One item that National is working on is our website. There are two parts to this overhaul – Part 1 is a new Associate Management System (AMS) which will launch this November. It is more web-based than our old system and will change as technology changes. Shortly you will see new features and be able to renew membership online and online learning modules will be available.

Part 2 will build out the website and will be rolled out in early 2025, with the ability to access data more easily, manage meetings, provide new search features, and all ASLA chapters will be integrated into the website in some way, which I think is particularly exciting!

There is a dues task force that has been busy developing membership alternatives for academia. Some of the strategies include:

- 1.) Joint invoicing for ASLA and CELA members
- 2.) Discounts for bulk memberships
- 3.) A subscription option for public sector professionals
- 4.) Streamlining categories for emerging professionals
- 5.) Revisiting Emeritus Status

There are a lot of exciting things happening, so stay tuned. Remember to think globally and act locally. We always need passionate professionals willing to volunteer. I hope to see you all at chapter events!

UPCOMING EVENTS & MEETINGS

OCTOBER

28 ASLASD GOLF TOURNAMENT
1030AM – 8PM
MADERAS GOLF CLUB

[INFO + REGISTRATION](#)



We wore costumes last year!

NOVEMBER

6-7 EVERDE 10TH ANNUAL
HORTICULARAL ENCOUNTER

13 BIODIVERSITY METRICS WEBINAR

[LEARN MORE](#)

19 EXECUTIVE COMMITTEE MEETING
6PM | ONLINE

20 HOLIDAY PARTY, MISSION BAY
YACHT CLUB | 6:30PM

DECEMBER

18 EXECUTIVE COMMITTEE MEETING
6PM | ONLINE

CHECK OUT OUR WEBSITE FOR ALL OUR CURRENT & UPCOMING EVENTS

[ASLASD EVENTS](#)

SAN DIEGO CHAPTER 2024 EXECUTIVE COMMITTEE

PRESIDENT

Jacqueline Higgins, ASLA
Forever Balboa Park
619.331.1920

PRESIDENT ELECT – FUNDRAISING

Kathryn Kanaan, ASLA
KDA Landscape Architects
619.840.5174

SECRETARY

Alexander Wade, ASLA
Rick Engineering
619.291.0707

PAST PRESIDENT

Martin Armstrong, ASLA
Armstrong Land Development
619.283.8818

VP COMMUNITY OUTREACH

Difan Chen, ASLA
KTUA Landscape Architecture & Planning
607.793.8866

VP PROGRAMS/EDUCATION

Kenya Huevo, ASLA
LPA
619.795.2555

PROGRAMS/SOCIAL CHAIR

Elissa Urbina, ASLA
GroundLevel
619.984.4840

VP VISIBILITY/PUBLIC AFFAIRS

Ruoxi (Cisy) Cao, Associate ASLA
IDS Group

CHAPTER TRUSTEE

Patricia Trauth, ASLA
Rick Engineering Co.
619.278.5656

CALIFORNIA COUNCIL OF ASLA

Phil Armstrong, ASLA
The Lightfoot Planning Group
760.692.1924

Marty Schmidt, ASLA

Environs
619.232.7007, ext. 101

EMERGING PROFESSIONAL CO-CHAIRS

Gwen Stark, ASLA
KTUA
619.294.4477

Fernanda Suarez, ASLA

MIG
619.682.3841

CLIMATE ACTION COMMITTEE

Stephanie Green, ASLA
Landscape Architect
619.630.8730

GOLF COMMITTEE CO-CHAIRS

Kathryn Kanaan, ASLA
KDA Landscape Architects
619.840.5174

Gregg Roesink
Hunter Industries
760.703.2474

PUBLIC SPACES ADVOCACY COMMITTEE

Wei Wang, ASLA
Van Dyke Landscape Architecture
858.504.0392

EXECUTIVE DIRECTOR

Tracy Morgan Hollingworth
1050 Rosecrans St., Ste. B
San Diego, CA 92106
619.283.8818

ASLASD NEWSLETTER DESIGNER

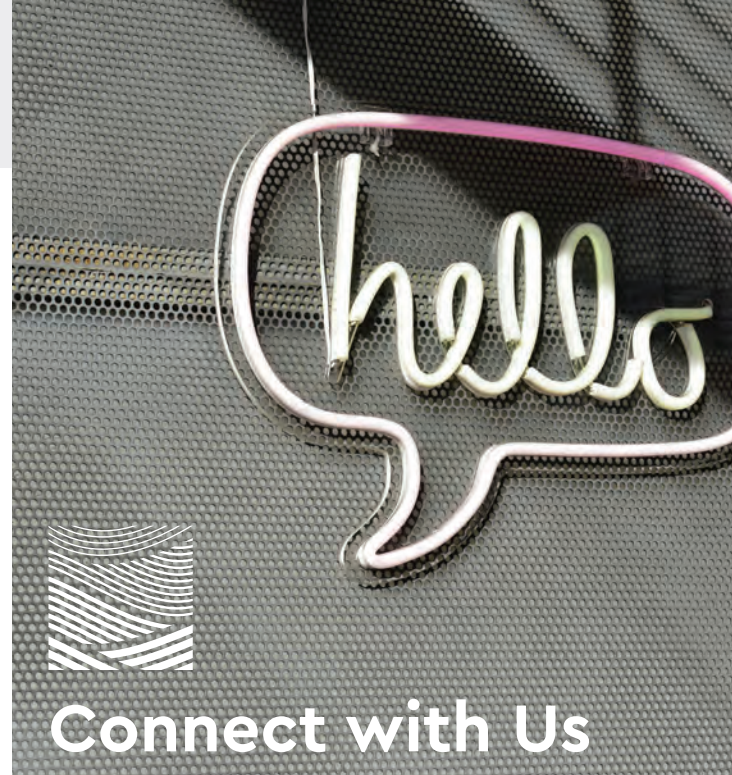
Kari Cureton
Sarit + State Creative Studio
619.318.3454

THANK YOU TO OUR 2024 SPONSORS

T.B. PENICK & SONS, INC.



AGRI-SERVICE ► ANOVA ► BENCHMARK LANDSCAPE ► NATIVE WEST



Connect with Us



asla-sandiego.org

Mailing Address:
1050 Rosecrans Street, Suite B
San Diego, CA 92106

619.283.8818